

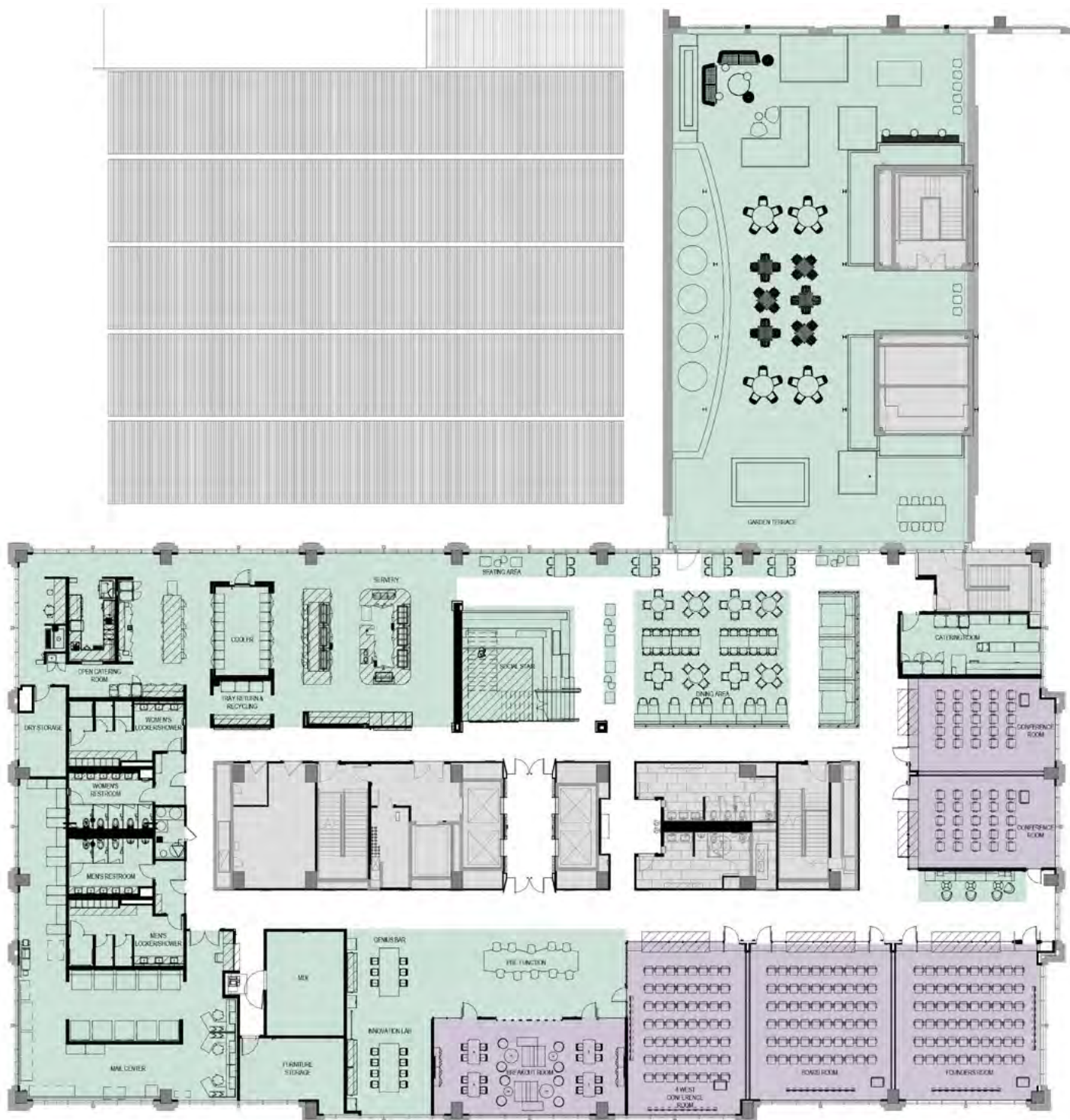




Credit Human is a San Antonio-based federal credit union with a Texas history that spans decades. The company values people above all else and strives to place the interest of its members first while maintaining a culture of respect for all. The design of their new Pearl District office is an investment for people within the space. It leverages biophilic principles, locally reclaimed wood, elevated indoor air quality, and material transparency to create an environment that radiates wellness.

Credit Human's goal was to set a new sustainable standard as stewards for a better environment. The new workplace aims for the highest standards of mitigating waste stream, plug load control at the workstations, daylight harvesting, 150,000+ gallons of reclaimed water, reducing potable water usage by 97%, and a solar field that covers the roof.

Credit Human embarked on a journey to curate the best work environment experiences while shifting their operational culture. The result was a 100% open office environment with no private offices. The furniture supports various work settings in the open work areas to provide adjacent meeting spaces to support spontaneous collaboration. Every other floor houses a large break area or small coffee bar to promote vertical movement via an eight-floor, interconnecting stair. From phone rooms to 12-person meeting rooms, the office plan supports an abundance of workspaces, granting employees a more agile work environment. To promote wellness, a café on the fifth floor including health food options and locker rooms support healthy choices for the employees.



CONFERENCE/COLLABORATION
SUPPORT

Amenity Floor
Level 5



- CONFERENCE/COLLABORATION
- SUPPORT
- WORKSTATIONS

Typical Workplace Floor
Levels 6-11



We're here to hear you.



credit human







The biophilic trellis is made from reclaimed wood from the building demo, located 1.3 miles from the site. All artwork provided by local San Antonio artists.





Energy

43.6% more efficient than a code compliant building = 20.38 EUI before solar. 40% energy provided by 1 megawatt on-site solar array.



Water

97% water use reduction under IPC via rainwater collection for irrigation, sewage conveyance, cooling tower, and ultra-efficient fixtures. 100% of storm water is captured and treated on-site.



IAQ

Increased outdoor ventilation, low-emitting materials, bipolar ionization filtration, IAQ testing before occupancy.



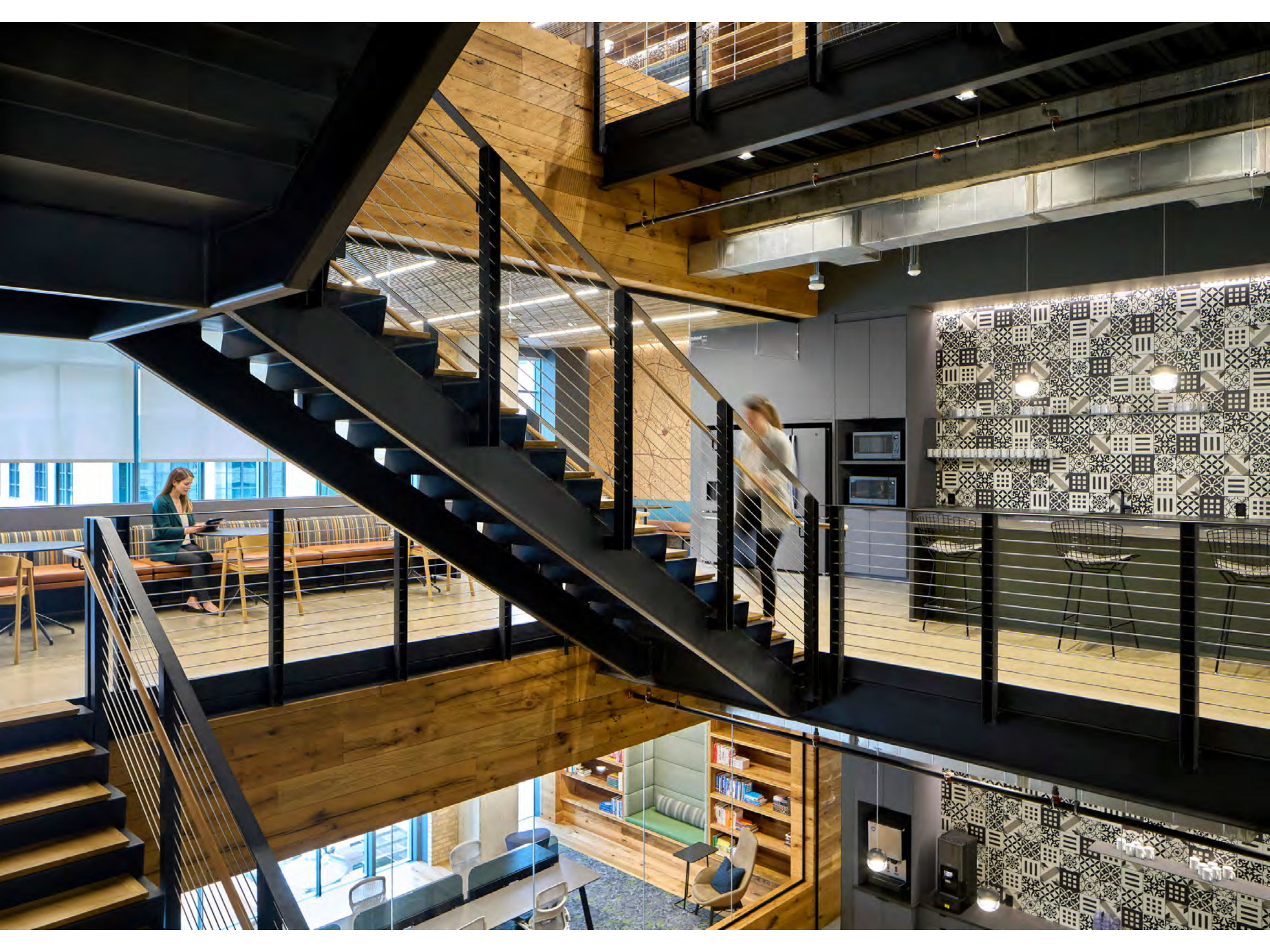
Materials

Less is more and durable approach to materials. All materials evaluated via longevity, embodied energy, and health.



Waste

Waste-free kitchens, recycling, composting via on-site digester.





no finish

reclaimed wood

plant-based fabric
with Indoor
Advantage Gold
Certification

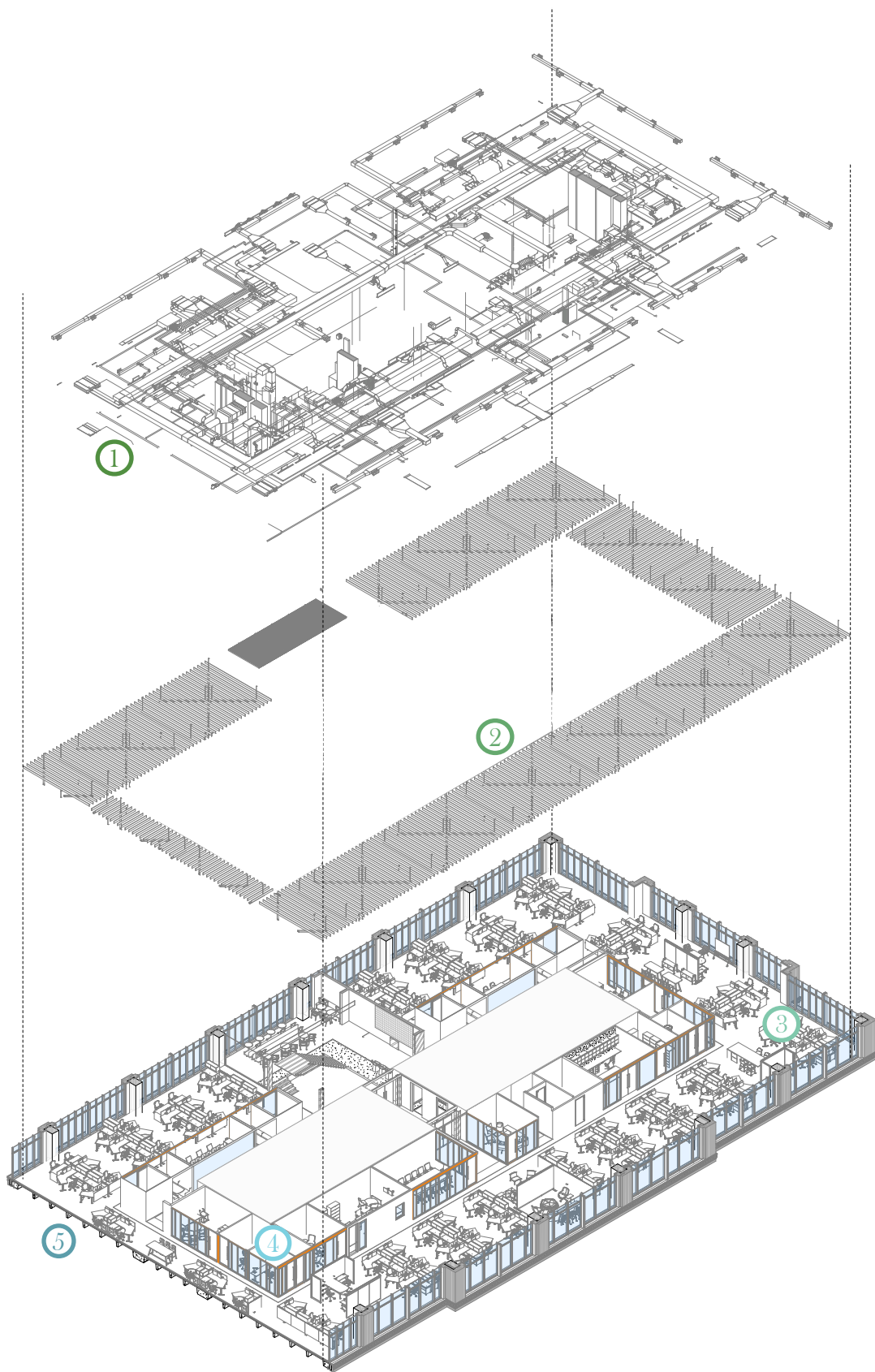
BIFMA Level and
Indoor Advantage
Gold Certified

local tile

red list free

GREENGUARD
Gold Certified

Living Product Challenge
Petal Certification and
red list free



1

Power of the Earth

Geothermal loop ties to the Variable Refrigerant Flow HVAC system to condition the building.

2

Acoustics are Important

Acoustic baffles and sound masking deployed throughout the workspace to control acoustical energy to provide the right balance of acoustical privacy and acoustical activity.

3

Starving for Power

Power at the workstations is connected to the occupancy sensor of the lighting and both systems turn off when areas are not occupied.

4

Long Life, Loose Fit

Designed for change with demountable partitions and reconfigurable spaces. Raised technical floor for easy power and data reconfiguration.

5

Elevated

Technical access floor allows easy reconfiguration of power and data.



